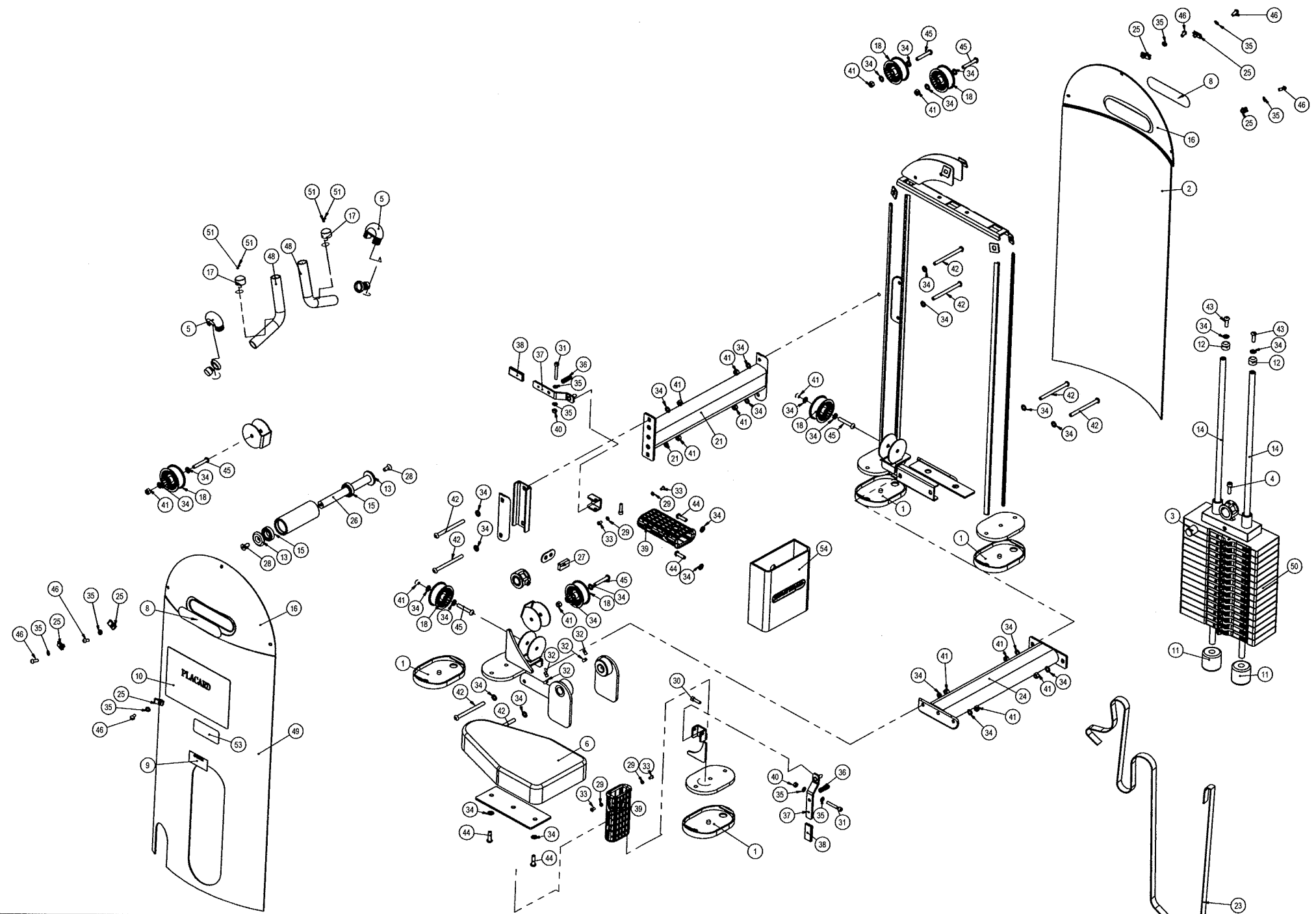


REVISION HISTORY				
REV	DATE	DESCRIPTION	ECO	BY
A	11/20/05	PRODUCTION RELEASE	11956	AK



ITEM NO.	STARTRAC P/N	INRAY P/N	DESCRIPTION	QTY.
1	730-0216	IN-B75030900	PAD, FOOT, FRAME, WELDED	4
2	730-0233	IN-S10121500	SHROUD, REAR, IN-S5100	1
3	730-0236	IN-S10121700	PIN, BELT ANCHOR	2
4	730-0237	GB70M10-30A2-70NL	SCREW, M10x30, SHS, SS	2
5	730-0292	IN-S21003000	CAP, ARMS, IN-S2100	2
6	730-0299	IN-S33201100	PAD, SEAT, IN-D3340	1
7	730-0318	IN-S33201200	ASSY, CHEST PAD, IN-S3320	1
8	730-0363	STARTRAC1	LOGO, STARTRAC	2
9	730-0365	CAUTION	LABEL, CAUTION, PINCH POINT	1
10	730-0404	TZSS3320	PLOACARD, INSTRUCTION, IN-S3320	1
11	730-0562	IN-D10132900	BUMPER, STACK, 60MM	2
12	730-0565	IT80129500	CAP, END, HANDLE	2
13	730-0656	IN-S51102100	CAP, 50MM OD	2
14	730-0662	IN-S21001300	WEIGHT STACK, GUIDE RAIL	2
15	730-0673	GB2766005-2Z	ISO 15 RBB - 1025 - 14, SI, NC, 14, 68	2
16	730-0702	IN-D10132800	SHROUD, UPPER	2
17	730-0704	IN-B72001200	CAP, 25MM, ALUMINUM	2
18	730-0721	IN-S51101000	PULLEY, 75MM	6
19	730-0755	IN-S33200100	WEIGHT STACK FRAME	1
20	730-0756	IN-S33200200	ASSY, MAIN FRAME	1
21	730-0759	IN-S33200500	CROSSBEAM, UPPER, FRAME	1
22	730-0761	IN-S33200700	SEAT POST ADJUSTMENT, EXTENSION	1
23	730-0778	IN-S10112000	BELT, 15.5 FT LONG	1
24	730-0840	IN-S33200400	CROSSBEAM, LOWER, FRAME	1
25	730-0845	IN-S21004800	SHROUD, MOUNTING, U-STYLE, CLIP	6
26	730-0846	IN-S33200800	SHAFT, 25MM X 234	1
27	730-0858	83004700	BUMPER, 45X25	1
28	730-0870	CNLM10-25A2-70	SCREW, M10X25, FHM, HK, SS	2
29	730-0885	GB41M8A2-70	NUT, M8, JAM, HEX, SS	4
30	730-0891	GB70M8-30A2-70NL	SCREW, M8X30, SHS, SS	2
31	730-0892	GB70M8-55A2-70	SCREW, M8X55, SHS, SS	2
32	730-0896	GB77M8-16A2-70	SCREW, M8X16, SET, SS	4
33	730-0899	GB818M6-12A2-70	SCREW, M6X12, BHC, SS	4
34	730-0908	GB9510A2-70	WASHER, M10, FLAT, SS	34
35	730-0910	GB958A2-70	WASHER, M8, BELLEVILLE, SS	10
36	730-0911	HF1642303	ADJUSTMENT HANDLE, COMPRESSION SPING	2
37	730-0930	IN-B72010600	ASSY, EXTENSION ADJUSTMENT HANDLE	2
38	730-0935	IN-B72011400	ASSY, ADJUSTMENT HANDLE, END, SLEEVE	2
39	730-0936	IN-B72011700	ASSY, TUBE, INSERT, SLEEVE	4
40	730-1103	NM8A2-70	NUT, M8, NYLON PATCH, SS	2
41	730-1104	NM10A2-70	NUT, M10, NYLON PATCH, SS	14
42	730-1112	PNLM10-130A2-70	SCREW, M10x130, BH, SS	8
43	730-1118	PNLM10-30A2-70	SCREW, M10, BHC, HK, SS	2
44	730-1119	PNLM10-35A2-70	SCREW, M10x35, BH, SS	4
45	730-1122	PNLM10-63A2-70	SCREW, M10x63, BHC, SS	6
46	730-1138	PNLM8-20A2-70	SCREW, M8X20, BHC, SS	6
51	730-1155	YZGB7710-32x3.2DS2	SCREW, 10-32x3.2, SET	4
48	730-1256	ST090800-S3320	HANDLE, SLEEVE, IN-S3320	2
49	730-1333	730-1333	SHROUD, LNL, S3320	1
50	730-1400	730-1400	WSA-LNL, 225LB, 15H	1
51	730-1478	IN-S33200300	ASSY, ARM, S3320	1
52	730-1479	IN-S33200600	ASSY, CHEST PAD, ADJUSTMENT	1
53	730-1491	730-1491	LABEL, INSTRUCTIONS, LOCK N LOAD	1
54	730-1492	730-1492	HEAD STRAP, IN-S3320	1

REPLACEMENTS				
Item	StarTrac p/n	Description	Inray p/n	Qty
1	730-0216	PAD, FOOT, FRAME, WELDED	IN-B75030900	4
7	730-0318	ASSY, CHEST PAD, IN-S3320	IN-S33201500	1
6	730-0299	PAD, SEAT, IN-D3340	IN-S33201100	1
2	730-0233	SHROUD, REAR, IN-S5100	IN-S10121500	1
49	730-1070	SHROUD, ELONGATE, INNER	IN-S33200900	1
			IN-D10132800	1
16	730-0228	KIT, UPPER SHROUD	PNLM8-20A2-70	3
			GB958A2-70	3
			IN-B72011700	2
			GB41M8A2-70	2
39	730-0213	KIT, SEAT SLEEVE, IN-B7502	GB818M6-12A2-70	2
			IN-B72010600	1
			IN-B72011400	1
			HF1642303	1
			GB70M8-55A2-70	1
			GB958A2-70	2
37	730-0251	KIT ADJUSTMENT HANDLE, IN-D1014	IN-B72001200	1
			YZGB7710-32x3.2DS2	2
			SLEEVE RUBBER	2 FT
			IN-S21002800	15.5 FT
17	730-0215	ASSY END CAP, 25.4MM, ALUM	IN-S10121700	2
			GB70M10-30A2-70	1
23	730-0169	KIT, HARDWARE, IN-S5110	N/A	n/a

PRODUCTION RELEASE
DOCUMENT STATUS:

CLASS OF WORK	UNLESS OTHERWISE SPECIFIED DIMS ARE IN MM TOLERANCES FOR MEASURE OF LENGTH ARE:								MATERIAL SEE BOM
	0.5	1.0	1.5	2.0	3.0	4.0	5.0	6.0	
FINE	±0.05	±0.05	±0.1	±0.15	±0.2	±0.3	±0.5	---	
MEDIUM	±0.1	±0.1	±0.2	±0.3	±0.5	±0.8	±1.2	±2	
COARSE	±0.2	±0.3	±0.5	±0.8	±1.2	±2	±3	±4	
VERY COARSE	---	±0.5	±1	±1.5	±2.5	±4	±6	±8	

UNISEN, INC. DBA 14410 Myford Road Irvine CA 92606

91L-S3320-13BSS A

FINISH FRAME COLOR: STAR TRAC SILVER (HP FULLER) UPHOLSTERY COLOR: STAR TRAC GREY (SLATE)

VENDOR: N/A P/N: N/A

SCALE: 1:25 SHEET 1 OF 1 SHEET SIZE: B